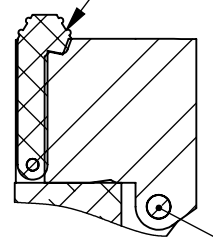


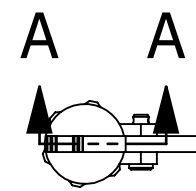
8 7 6 5 4 3 2 1

Flip latch holds sickle blade in position.

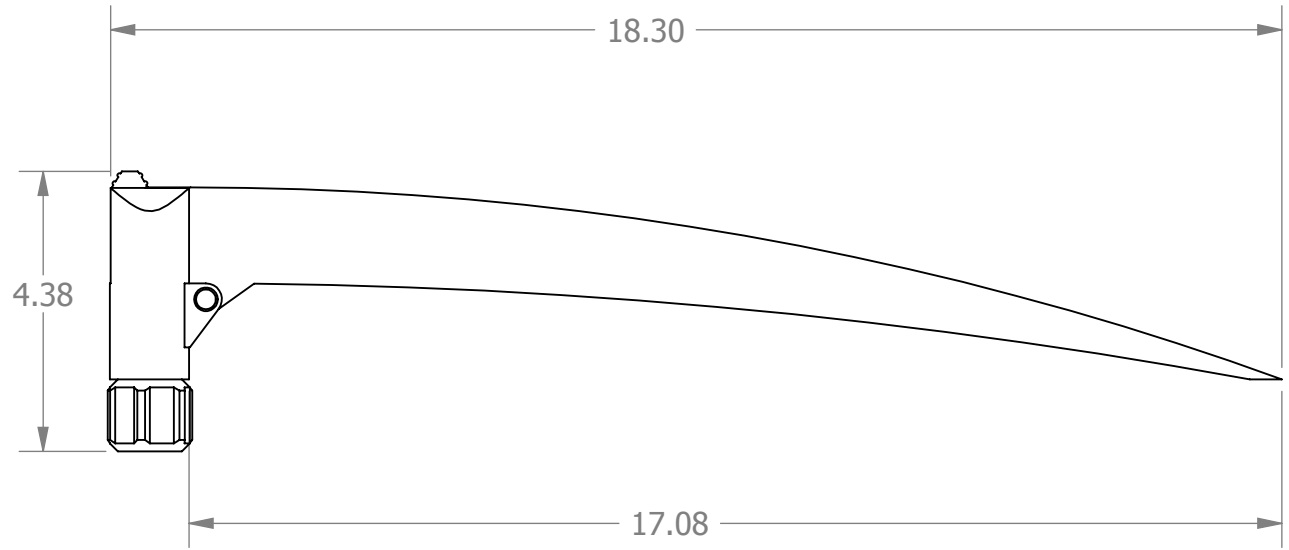


Sickle blade rotates on COTS Clevis 1/4" pin
Removable for quick change of blade

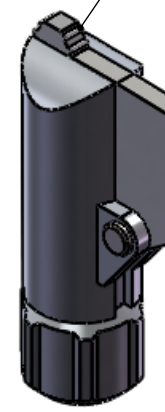
SECTION A-A
SCALE 1 : 2



.25



Ridges on flip latch ease gloved operation



Flat plain carbon steel 1/4" blade can be sharpened if needed

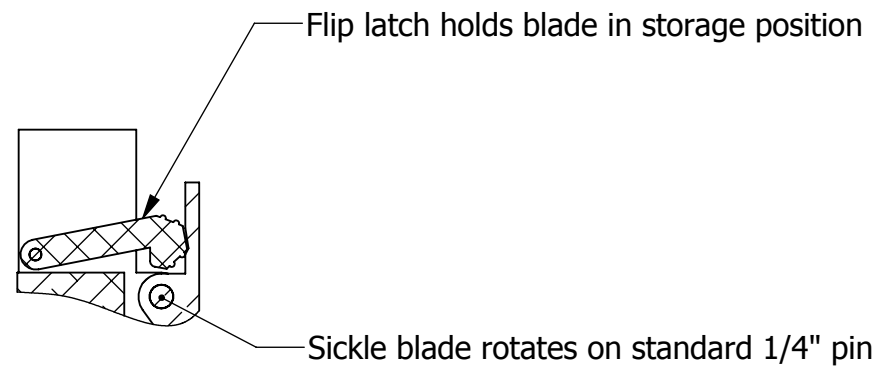
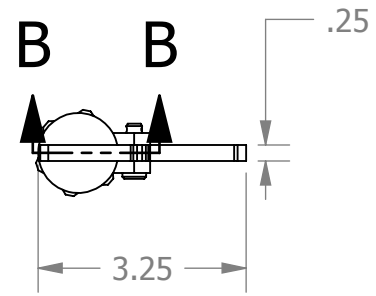
Alternate blade lengths and materials available.

OPERATION POSITION
(FOLDED SHOWN ON SHEET 2)

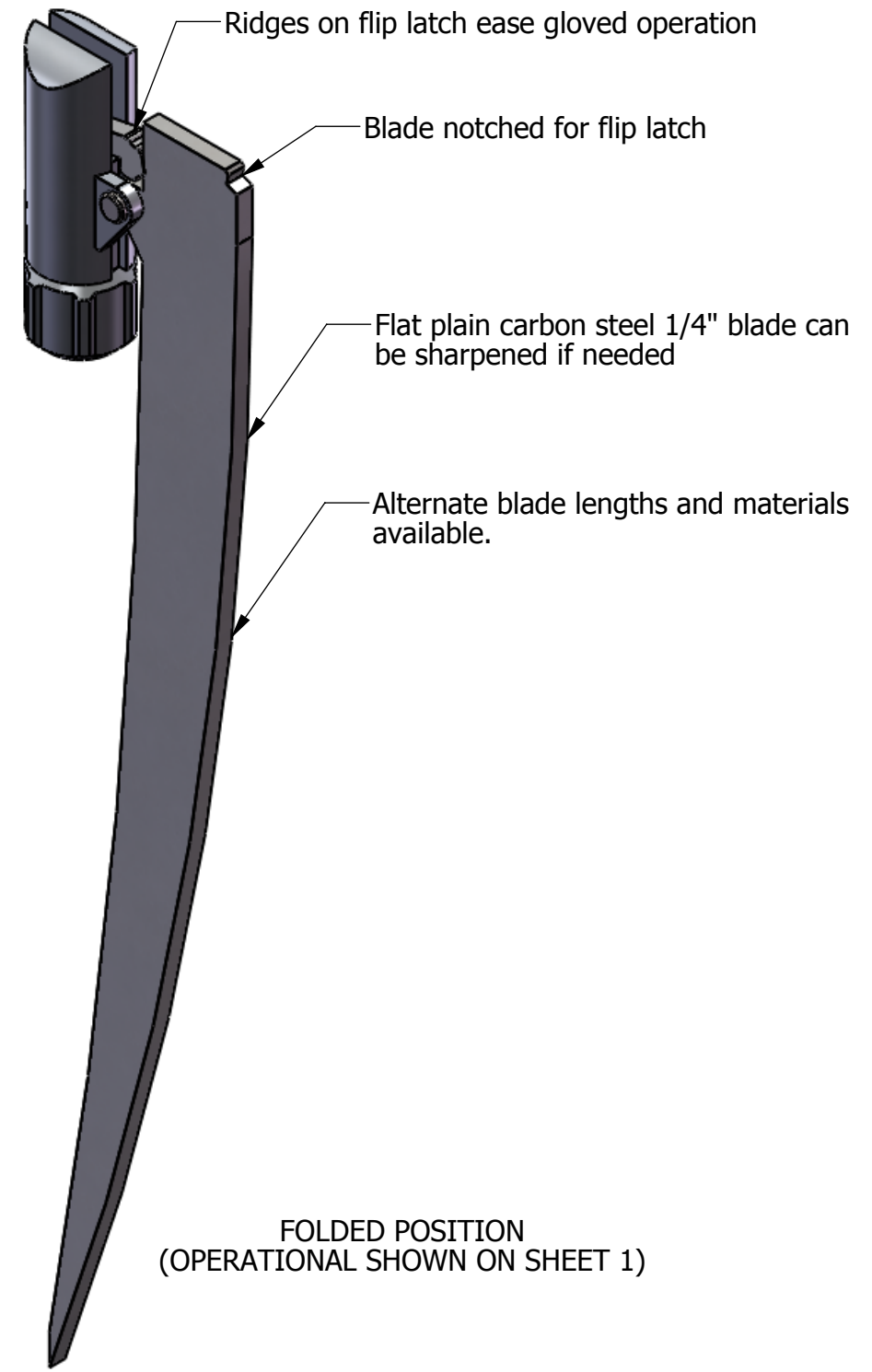
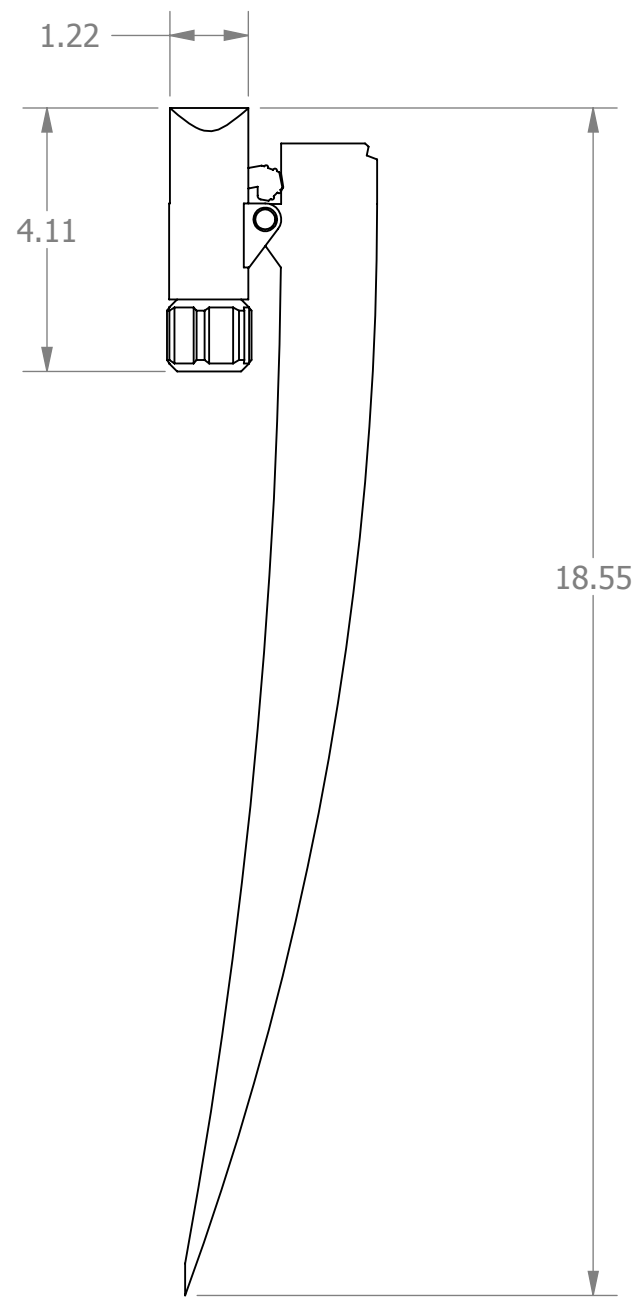


		UNLESS OTHERWISE SPECIFIED:		NAME	DATE	ATMS - CDR DRAWINGS	
		DIMENSIONS ARE IN INCHES		DRAWN		TITLE:	
		TOLERANCES:		CHECKED		Sickle	
		FRACTIONAL ± 1/32		ENG APPR.		Effector Assembled	
		ANGULAR ± 0.1		MFG APPR.		SIZE	DWG. NO.
		TWO PLACE DECIMAL ±0.05		Q.A.		B	ATMS-011A
		THREE PLACE DECIMAL ±0.005		COMMENTS:		SCALE: 1:4	WEIGHT: 1.75
		INTERPRET GEOMETRIC TOLERANCING PER:		*UNLESS OTHERWISE SPECIFIED		SHEET 1 OF 2	REV
		MATERIAL					
		6061 Alloy					
		FINISH					
NEXT ASSY	USED ON	DO NOT SCALE DRAWING					
APPLICATION							

8 7 6 5 4 3 2 1



**SECTION B-B
SCALE 1 : 2**



**FOLDED POSITION
(OPERATIONAL SHOWN ON SHEET 1)**



UNLESS OTHERWISE SPECIFIED:		NAME	DATE	ATMS - CDR DRAWINGS	
DIMENSIONS ARE IN INCHES		DRAWN		TITLE: Sickle Effector Folded	
TOLERANCES:		CHECKED			
FRACTIONAL ± 1/32		ENG APPR.			
ANGULAR ± 0.1		MFG APPR.			
TWO PLACE DECIMAL ±0.05		Q.A.		SIZE DWG. NO. REV	
THREE PLACE DECIMAL ±0.005		COMMENTS:		B ATMS-011B	
INTERPRET GEOMETRIC TOLERANCING PER:		*UNLESS OTHERWISE SPECIFIED		SCALE: 1:4 WEIGHT: 1.75 SHEET 2 OF 2	
MATERIAL					
6061 Alloy*					
FINISH					
NEXT ASSY	USED ON				
APPLICATION		DO NOT SCALE DRAWING			